

International Conference on New Technologies and Innovations in Rural Roads



National Rural Infrastructure Development Agency

Ministry of Rural Development, Government of India



CLOSE TO OUR CUSTOMERS

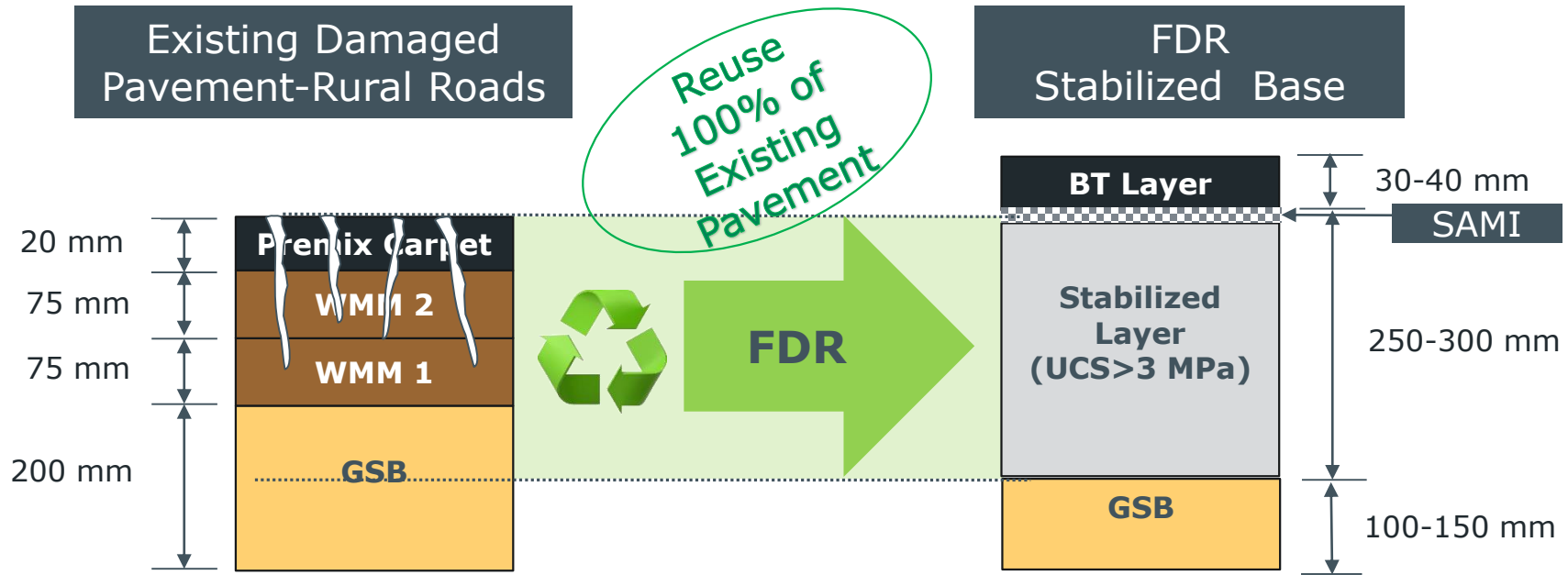
About WIRTGEN INDIA



- Technological and innovation leader in road construction and rehabilitation
- 25+ years of operation in INDIA
- 5 strong brands: WIRTGEN, VÖGELE, HAMM, KLEEMANN



Rehabilitation by Full Depth Reclamation (FDR)



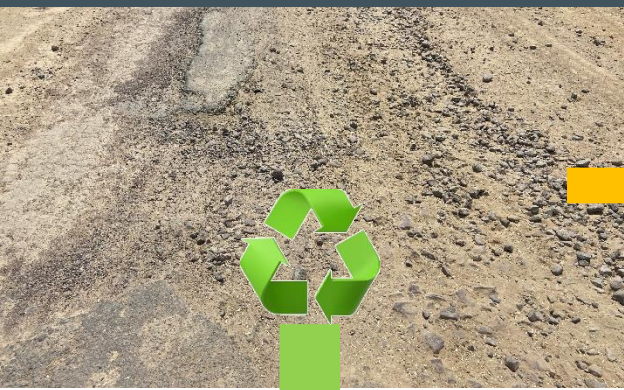
Cost-effective, Sustainable & Fastest Way of Rehabilitation of Roads with 100% Reuse of Existing Pavement Material



Full Depth Reclamation (FDR) Technology



Existing Damaged Road



Pre-spreading Cement/Additive using Automated Cement Spreader **SW16MC**



Pulverizing using Modern Wheeled Recycler equipment **Wirtgen WR240**



Stabilized Base using FDR technology



Compacting using heavy duty 15-20 Ton Padfoot Roller **Hamm 139i D**



Process of Pulverization



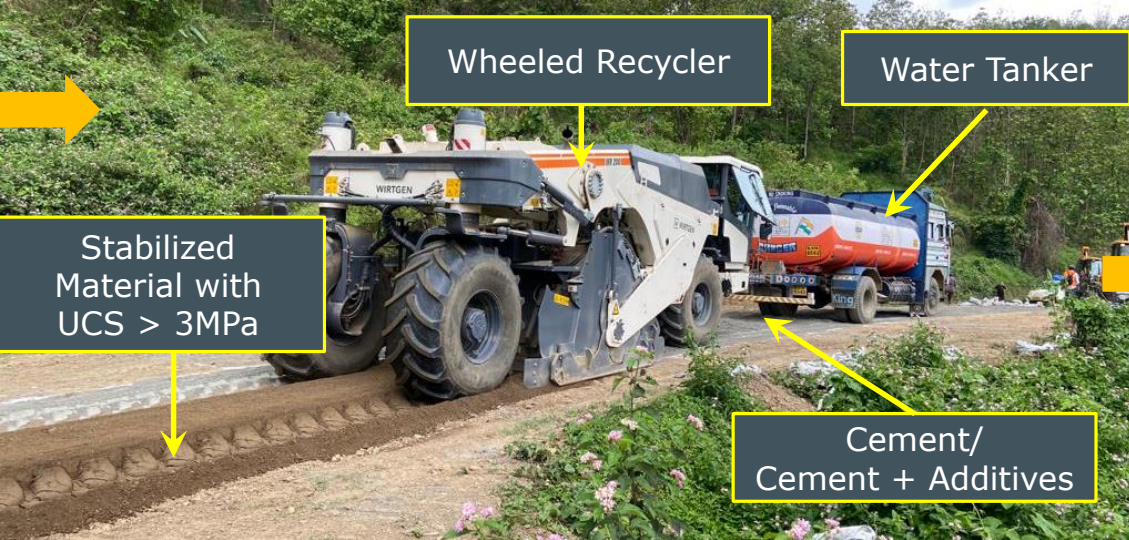
FULL DEPTH RECLAMATION (FDR)

EXPERIENCE IN INDIA

Existing Damaged Road



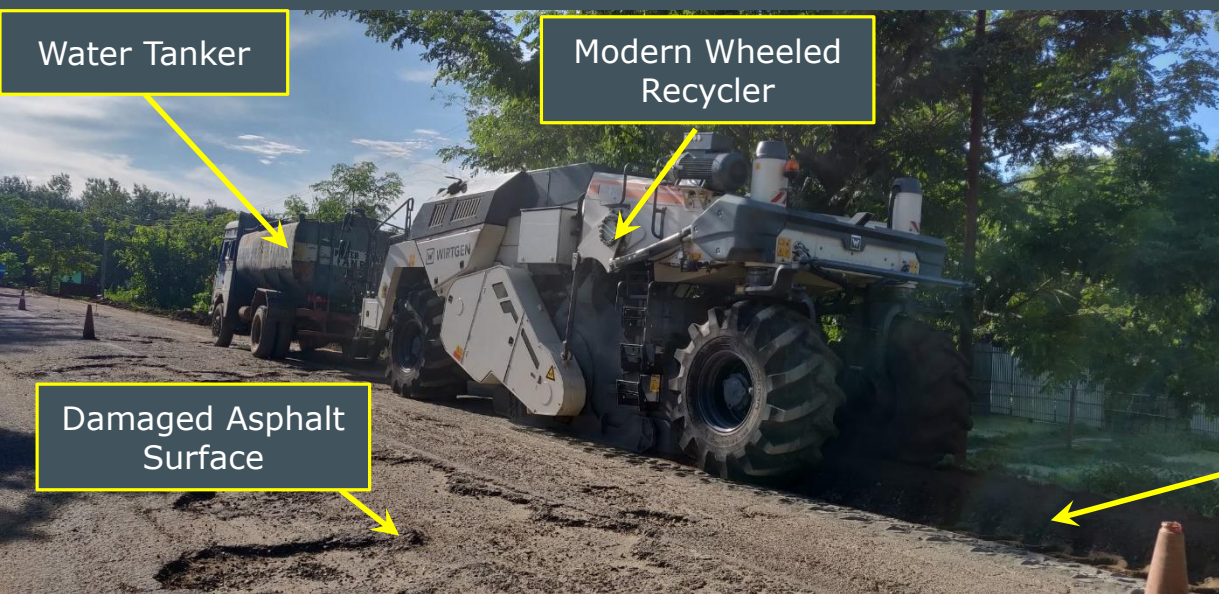
Pre-Spread Cement/Additive



Final Stabilized Surface



FDR – Assam





Damaged Asphalt Surface



Modern Wheeled Recycler

Pre-spread Cement/Additive



Stabilized Material with UCS > 3MPa

Our Experience in Rural Roads

Uttar Pradesh



Total 1250 Kms Awarded

Completed 50+ Kms

Andhra Pradesh



Total 400 Kms Awarded

Completed 300+ Kms

Our Experience in Rural Roads

Nagaland



Total 100 Kms Awarded

Completed 40 Kms

Andaman



Total 180 Kms Awarded

Completed 100+ Kms

Wirtgen's Indian Competence



NHAI
14 Million Sqm



NHIDCL
1.3 Million Sqm



PMGSY
1 Million Sqm



Roads
1 Million Sqm



70+ Recyclers
operational across
INDIA

Benefits of FDR Technology

In-situ FDR with high performance machines ensures improved performance & high quality stabilized base - better service life.

100% aggregates recycling - reuse the existing crust - no mining for fresh aggregate required - reduced carbon footprint.



Increased structural capacity (High UCS), durability and improved road geometry



Only binder cement/cement & additive - 5-8% by weight is required - 95% reduction in transportation - reduced fuel consumption.



Faster construction
1km in 48 Hours -
practically
10km/month -
reduced impact on
society.

FDR Solutions by World Market Leader



Binder Spreader – **SW16MC**



Recycler – **WR200** (2m width)

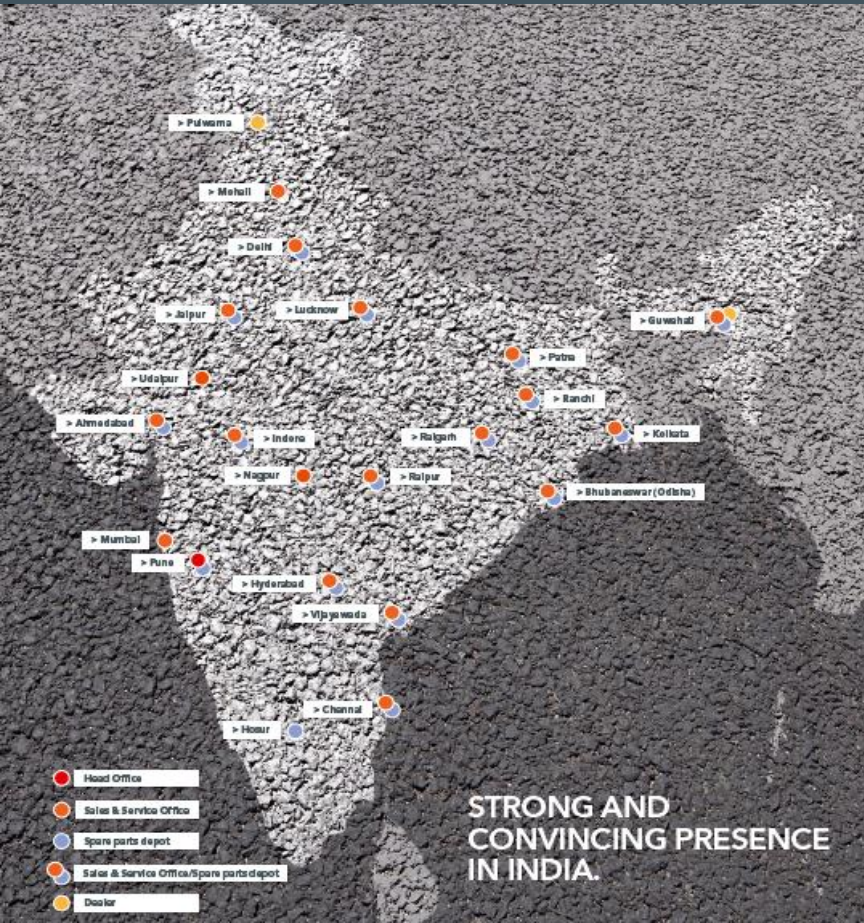


Recycler – **WR240** (2.4m width)



15 Ton Padfoot Roller **Hamm 139i D**





**STRONG AND
CONVINCING PRESENCE
IN INDIA.**

- ▶ Professional Sales and Service network
- ▶ 20+ Sales and Service offices with strong regional presence
- ▶ Reliable spare parts supply chain across India
- ▶ Highly skilled service team
- ▶ Strong team of product and application experts

Let's build the rural connectivity in a **SUSTAINABLE** way



Thank You